



the zenith of  
**Luxury**

**ORO**  
**CONSTELLA**

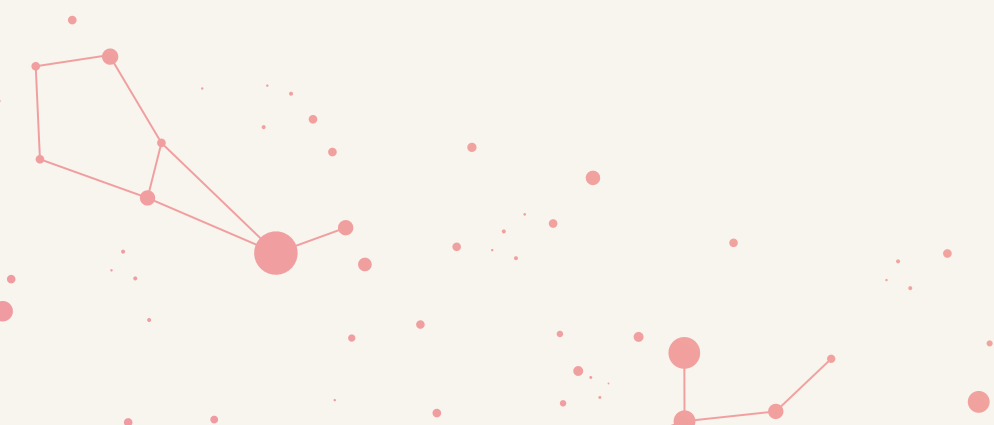
Luxury Homes  
Golf City, Shaheed Path, Lucknow

# An epitome of Quality & Trust

The inception of ORO dates back to the year 2017, emerging as a brainchild of industry veterans. We have swiftly gained a reputation by delivering an extensive portfolio of properties across Lucknow.

Ranging from state-of-the-art residential projects that seamlessly integrate luxurious lifestyles to commercial projects that take businesses to the next level. With our unwavering dedication to transforming urban spaces, we have successfully delivered high-rise towers, contemporary villas and townhouses in thriving communities.

The integrated expertise of our esteemed team has a keen eye for detail, from precise engineering to elegant interiors, ensuring unparalleled excellence in each project we undertake. With our steadfast commitment to timely completion, we have delivered over four projects in a short span of time. The relentless pursuit to build something extraordinary has earned ORO the seal of quality and trust from our prestigious clientele.



eye for detail  
high-rise towers  
extraordinary eye for detail high-rise towers  
contemporary villas eye for detail high-rise towers  
eye for detail high-rise towers eye for detail Luxurious Lifestyle  
high-rise towers eye for detail contemporary villas  
extraordinary contemporary villas eye for detail  
extraordinary contemporary villas eye for detail  
extraordinary Luxurious Lifestyle eye for detail contemporary villas  
Luxurious Lifestyle Luxurious Lifestyle high-rise towers Luxurious Lifestyle  
Luxurious Lifestyle eye for detail  
eye for detail Luxurious Lifestyle eye for detail  
unwavering dedication  
contemporary villas high-rise towers high-rise towers  
contemporary villas high-rise towers high-rise towers contemporary villas  
Luxurious Lifestyle high-rise towers Luxurious Lifestyle  
unwavering dedication unwavering dedication eye for detail  
eye for detail contemporary villas contemporary villas  
eye for detail Luxurious Lifestyle contemporary villas  
high-rise towers eye for detail  
eye for detail Luxurious Lifestyle high-rise towers  
Luxurious Lifestyle extraordinary Luxurious Lifestyle  
high-rise towers Luxurious Lifestyle eye for detail  
eye for detail  
contemporary villas contemporary villas  
contemporary villas extraordinary contemporary villas high-rise towers  
Luxurious Lifestyle Luxurious Lifestyle  
high-rise towers extraordinary contemporary villas  
contemporary villas eye for detail  
high-rise towers contemporary villas eye for detail contemporary villas  
extraordinary

# What is Luxury?



*When you surround yourself  
with fresh air*

*When your rendezvous with  
nature is an everyday affair*

*When you live amidst the hustle & bustle of the  
city yet away from the chaos of everyday life.*

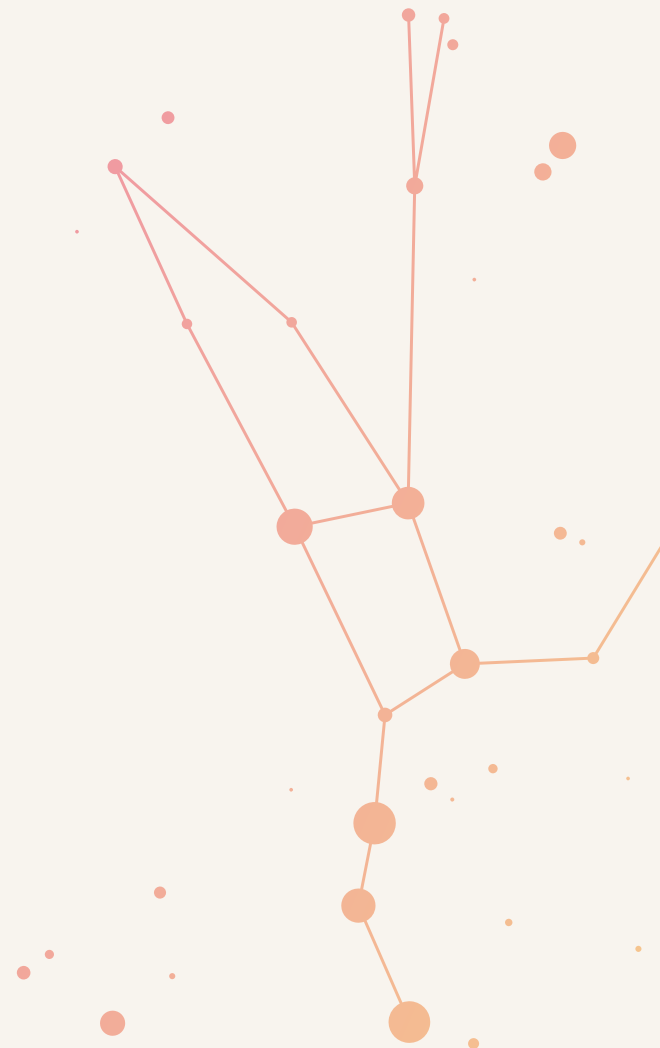
*When your home is a perfect blend of luxury,  
convenience and connectivity.*

*When life is around  
the corner*

*When the evenings are celebrated  
at the exclusive clubhouse*

*When it is layered  
with privacy*

*When it is  
**designed only for  
a selected few***





Unveiling a Grand Life at  
Golf City, Shaheed Path Road,

# Lucknow

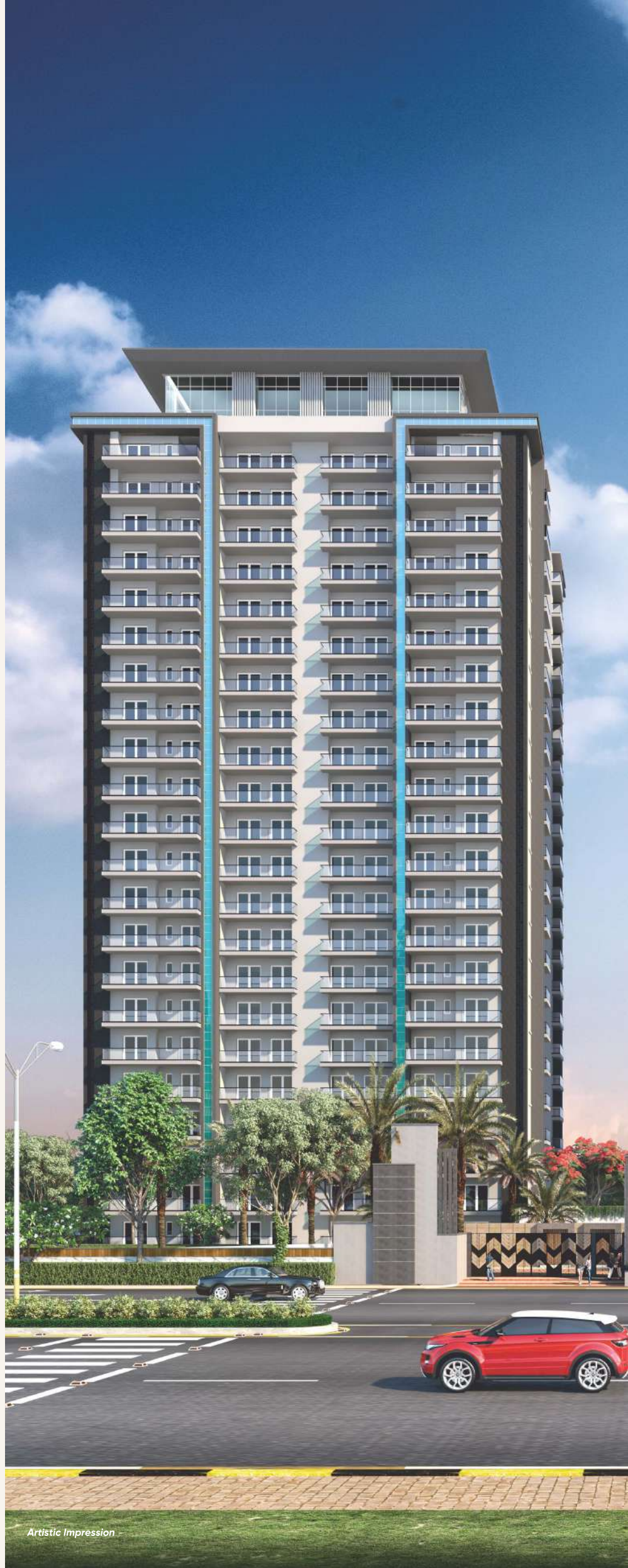
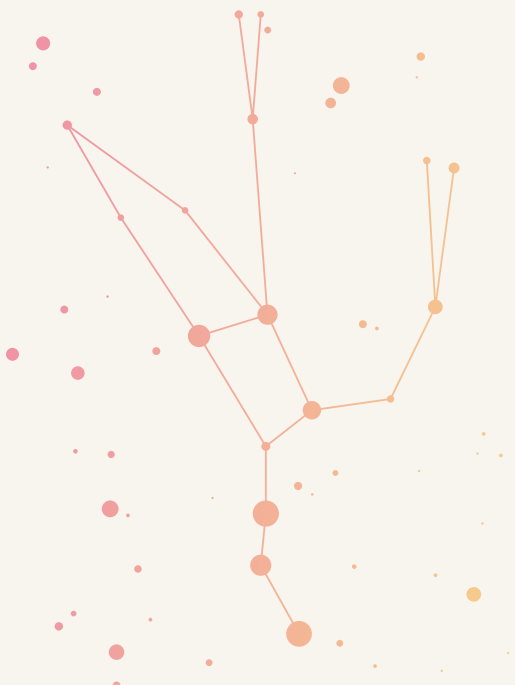


A Perfect Luxury  
Exquisite.  
Rare.   
Iconic.

## Welcome to Oro Constella

A world of pure opulence crafted for those who aspire the finest. Here luxurious pursuits are a slice of everyday reality.

In this realm of unparalleled exclusivity, enjoy a life of pure splendor and experience redefined elegance!



# Step into a World Built just for you



## EV Charging Points

Reduce your carbon footprint and embrace sustainable living here with the provisions of EV charging points



## Oxy Garden

Escape to a serene sanctuary at our Oxy garden, where you can surround yourself with nature's beauty and rejuvenate your mind, body, and soul



## Swimming Pool

Whether you're seeking a refreshing swim or a fun poolside gathering with loved ones, our swimming pool provides the perfect setting for both



## Steam & Spa

Indulge in ultimate relaxation at our luxurious spa, complete with rejuvenating steam rooms that will leave you feeling refreshed and renewed at Club Galaxia



## Tennis Court

Refine your tennis skills or enjoy a friendly game with family and neighbors on our pristine, well-maintained court



## Dedicated Car Parking

Experience the ultimate convenience with our state-of-the-art dedicated double basement car parking, featuring effortless in-and-out access and ample space to rev up your life with ease



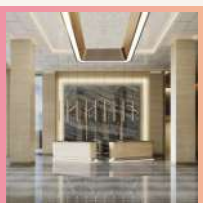
## Party Hall

Create unforgettable memories of joy and togetherness at our exclusive party hall, perfect for hosting special occasions in the Club Galaxia



## Club Galaxia

The ultimate destination for fitness, relaxation, and entertainment with family and friends, offering something for everyone to enjoy."



## Grand Entrance Lobby

Make a lasting impression on your guests with our magnificent Grand Entrance Lobby, designed to impress and awe with its grandeur and sophistication in each tower



## Pergola Sitout

Come together and create lasting memories in a welcoming environment that fosters strong bonds and friendships.

# A nature's paradise with a symphony of elegance

Own a home with green spaces to live a healthy life. Oro Constella is a paradise wrapped in enchanting greens where you breathe in the fresh air and exhale all your worries.

A paradise where you can truly unwind and rejuvenate yourself. Whether you're a nature lover or simply seeking a peaceful retreat away from the chaos of city life, Oro Constella is a perfect choice!







Artistic Impression

AN UNPARALLELED EXPERIENCE AWAITS YOU  
AT CLUB

# GALAXIA

Oro Constella is much more than a haven of green. It is a tapestry of experiences, unfolding gradually for you. Walk in our Club Galaxia and indulge in a wide range of amenities designed to keep your lifestyle a class above the rest. Spend quality time with friends and loved ones, relax in the health club, or simply have a good time in the party hall. Here you have innumerable means of rejuvenation, to have the time of your life.



POOL TABLE



RESTAURANT



GYM

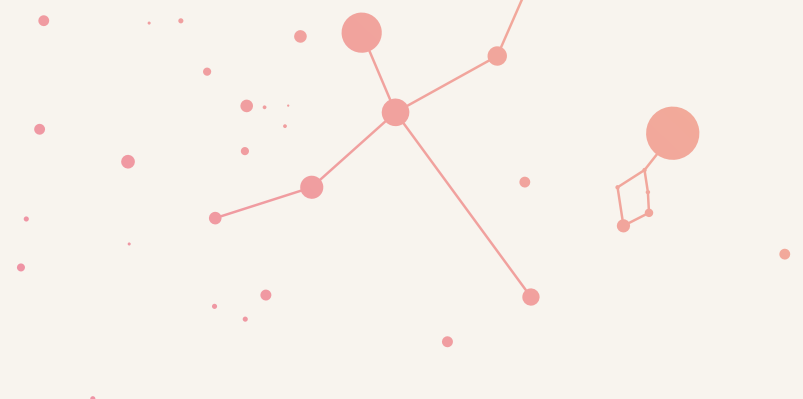


PARTY HALL



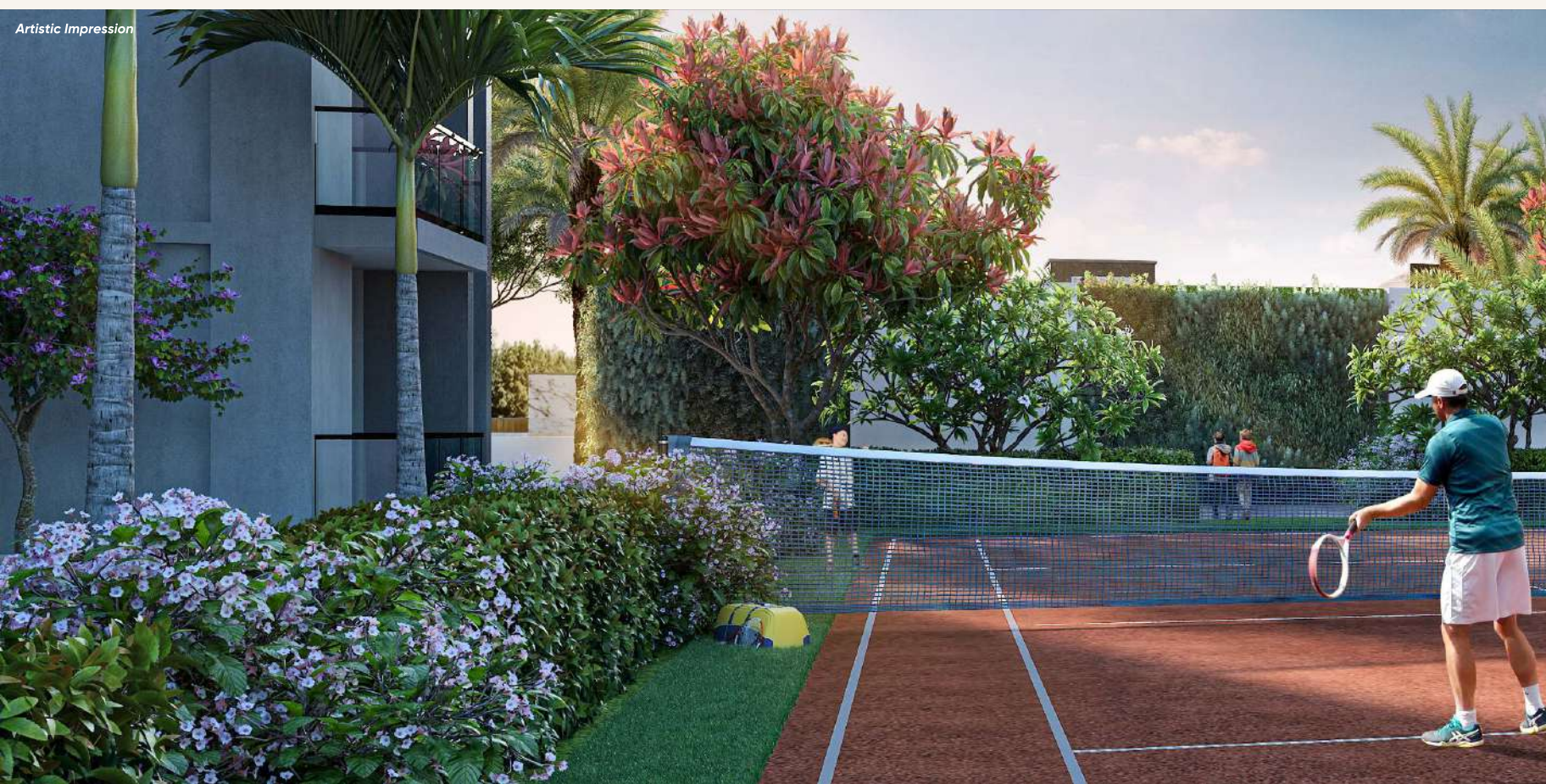
KIDS  
PLAY AREA

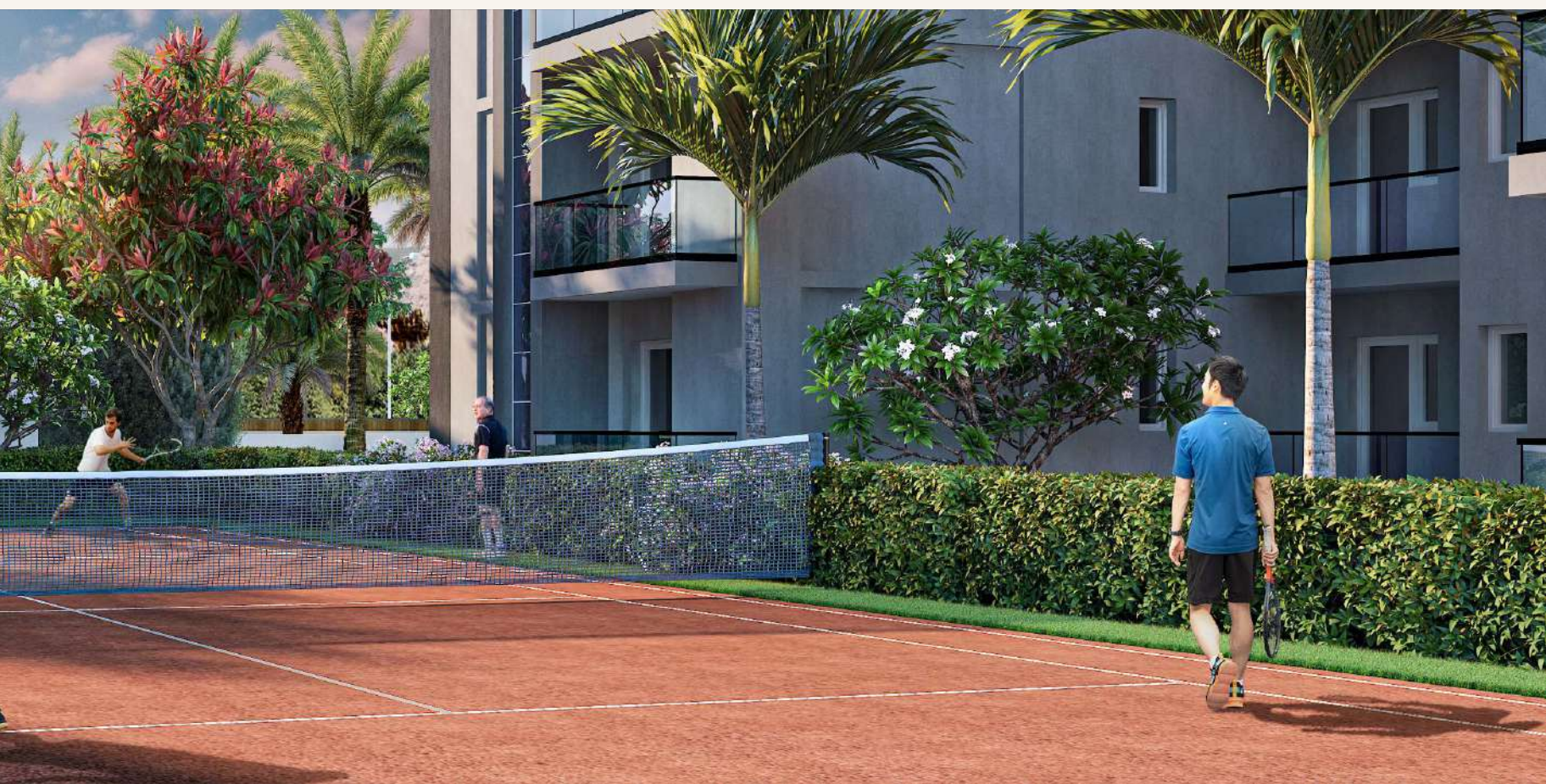
# Everything for Mind, Body & Soul



With a swimming pool, a gymnasium, a tennis court, and an open air space for yoga, you can have a different fitness routine every day and relish all of them. The exceptional facilities in an invigorating environment with over 79% open space and green area, Oro Constella makes it easy to have a happy mind and a healthy body.

**Zen Garden | Toddlers Park | Maze Garden | Jogging Track**

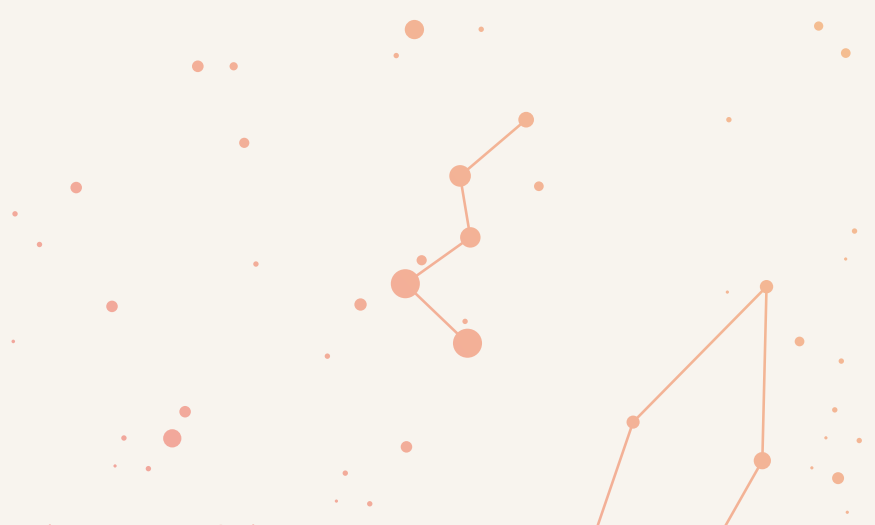


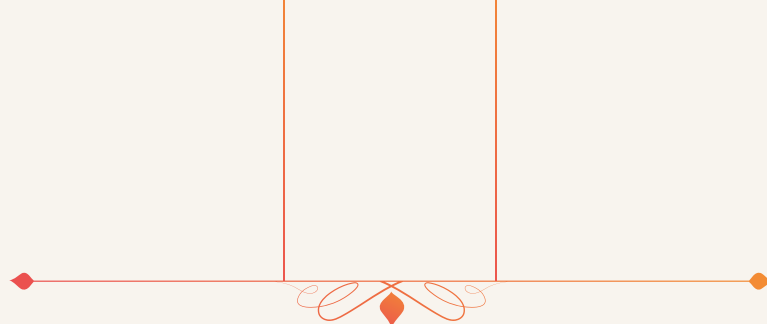




# Make a Statement with your Lifestyle

In every way, Oro Constella is a lifestyle beyond compare. From the moment you step in here, you'll be mesmerized by modern architectural aesthetics. The outdoor living space springs to life in ways you had never imagined. The indoors are a fairytale come true. Here the perfect blend of luxury and elegance attains a level of perfection that only few can match.





# Own a Home that defines you

Oro Constella offers you a choice between 3 & 4 BHK premium residences, penthouses, and duplexes. Here every abode has exceptional magnificence, convenience, and modern living, combined with the abundance of space and natural light to showcase an aura of exclusivity.

## Prime 3 BHK



Feels like a prime owners of a 3 BHK apartment, which features a luxurious living space that is perfect for families. It is designed with your comfort in mind and comes with all the amenities you need to make your living experience truly exceptional.

## Supreme 3 BHK with Servant Quarter



If you're looking for something even more exclusive, our Supreme Unit consists of 3 BHK with a servant quarter. This unit is perfect for those who require an extra room for their domestic help or as a separate work area.

## Royale 4 BHK with Servant Room



For those who desire a little more space, our Royale Unit is the 4 BHK + Servant Room. It is designed to provide you with the ultimate luxury living experience and comes with all the amenities you need to live your best life.

## Presidential 5 BHK DUPLEX with Servant Quarter



To get the feel of an exotic banglow in an apartment, one should choose our 5BHK with a servant quarter. This unit is ideal for those who require a little more privacy and space.

## Sky Villa 5 BHK Penthouse



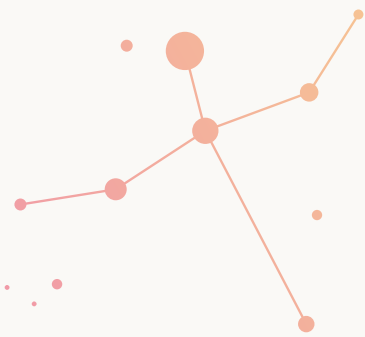
Finally, our crown jewel is the 5 BHK Sky Villa. This unit is designed to provide you with the ultimate luxury living experience, with breathtaking views of the surrounding cityscape.

## Site Layout Plan



### FEATURES

- |                          |                      |                      |
|--------------------------|----------------------|----------------------|
| 1. ENTRY/ EXIT           | 11. KIDS PLAY AREA   | 21. MEDITATION LAWN  |
| 2. GUARD ROOM            | 12. JOGGING TRACK    | 22. FRAGRANCE GARDEN |
| 3. DRIVEWAY              | 13. PLAZA            | 23. OXYGEN PARK      |
| 4. DECK                  | 14. CELEBRATION LAWN | 24. FEATURE WALL     |
| 5. PERGOLA SITOUTS       | 15. THEME PARK       | 25. STONE PLAZA      |
| 6. OPEN AIR THEATRE      | 16. PARKING          | 26. FEATURE PLAZA    |
| 7. TOWER ENTRY/ DROP OFF | 17. CLUB GALAXIA     | 27. GREEN COURT      |
| 8. SCULPTURE             | 18. SWIMMING POOL    | 28. SAND PIT         |
| 9. BADMINTON COURT       | 19. SUPERVISION AREA | 29. GAZEBO           |
| 10. OPEN GYM             | 20. TENNIS COURT     |                      |



# Floor Plans

## Tower Ariel & Vega



**GROUND FLOOR PLAN**



**TYPICAL FLOOR PLAN (1st Floor to 17th Floor)**



**18th FLOOR PLAN**

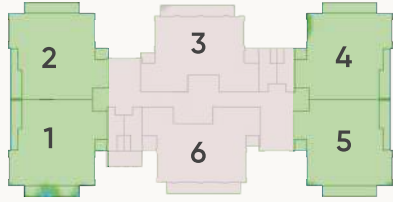


**19th FLOOR PLAN**





**20th FLOOR PLAN**

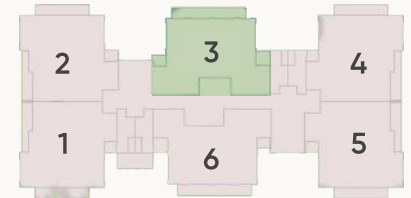


**PRIME UNIT PLAN**

3 BHK + KITCHEN + DINNING + 2 DRESS + 3 TOI + 3 BAL + SERVANT ROOM WITH TOILET

Carpet Area Sq. Ft.	Unit Area Sq. Ft.	Balcony Area Sq. Ft.	Core Area & Site Loading Sq. Ft.	Super Area Sq. Ft.
1351.74	1493.07	255.32	356.60	2105.00

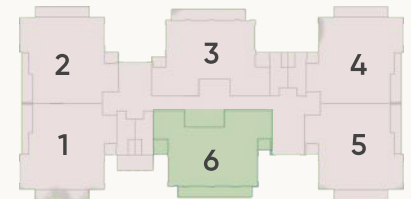
All areas are in Sq.Ft (1SqMtr. = 10.764 Sq.Ft)



**PRIME UNIT PLAN**

3 BHK + DINNING + DRESS + 3 TOI + 3 BAL

Carpet Area Sq. Ft.	Unit Area Sq. Ft.	Balcony Area Sq. Ft.	Core Area & Site Loading Sq. Ft.	Super Area Sq. Ft.
1235.49	1378.22	231.75	330.03	1940.00

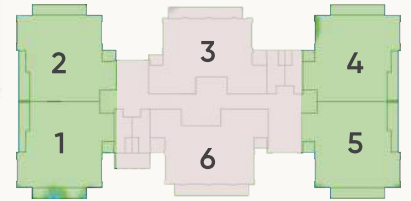


**PRIME UNIT PLAN**

3 BHK + DINNING + DRESS + 3 TOI + 3 BAL

Carpet Area Sq. Ft.	Unit Area Sq. Ft.	Balcony Area Sq. Ft.	Core Area & Site Loading Sq. Ft.	Super Area Sq. Ft.
1209.44	1355.30	229.17	325.54	1910.00

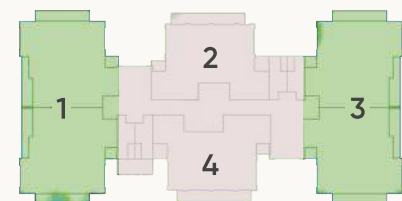
All areas are in Sq.Ft (1SqMtr. = 10.764 Sq.Ft)



**PRIME UNIT PLAN (18th Floor)**

3 BHK + DINNING + KITCHEN + 2 DRESS + 3 TOI + 3 BAL

Carpet Area Sq. Ft.	Unit Area Sq. Ft.	Balcony Area Sq. Ft.	Core Area & Site Loading Sq. Ft.	Super Area Sq. Ft.
1261.43	1383.07	237.24	334.70	1955.00



**PRESIDENTIAL UNIT PLAN (19th & 20th Floor)**

5 BHK + KITCHEN + DINNING + 4 DRESS + 5 TOI + 4 BAL + SERVANT ROOM WITH TOILET

Carpet Area Sq. Ft.	Unit Area Sq. Ft.	Balcony Area Sq. Ft.	Core Area & Site Loading Sq. Ft.	Super Area Sq. Ft.
2669.79	2934.27	714.41	746.33	4395.00

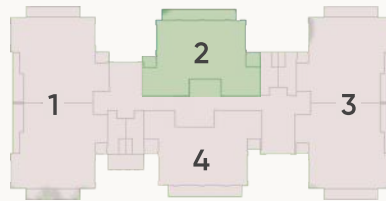
All areas are in Sq.Ft (1SqMtr. = 10.764 Sq.Ft)



**LOWER LEVEL PLAN**  
(19TH FLOOR)



**UPPER LEVEL PLAN**  
(20TH FLOOR)



**SKY VILLA UNIT PLAN (19th & 20th Floor)**

5 BHK + KITCHEN + DINNING + LOBBY + DRESS + 5 TOI + 6 BAL + SERVANT ROOM WITH TOILET

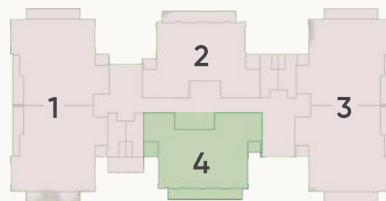
Carpet Area Sq. Ft.	Unit Area Sq. Ft.	Balcony Area Sq. Ft.	Core Area & Site Loading Sq. Ft.	Super Area Sq. Ft.
2470.98	2755.37	443.69	655.94	3855.00



**LOWER LEVEL PLAN**  
(19TH FLOOR)



**UPPER LEVEL PLAN**  
(20TH FLOOR)



**SKY VILLA UNIT PLAN (19th & 20th Floor)**

5 BHK + KITCHEN + DINNING + LOBBY + DRESS + 5 TOI + 6 BAL + SERVANT ROOM WITH TOILET

Carpet Area Sq. Ft.	Unit Area Sq. Ft.	Balcony Area Sq. Ft.	Core Area & Site Loading Sq. Ft.	Super Area Sq. Ft.
2418.89	2708.65	439.06	642.28	3790

# Tower Aster & Cosmo



**GROUND FLOOR PLAN**



**TYPICAL FLOOR PLAN (1st to 17th & 19th Floor)**



**18th FLOOR PLAN**



**20th FLOOR PLAN**



21ST FLOOR PLAN

**21st FLOOR PLAN**



**SUPREME UNIT PLAN (Ground Floor)**

3 BHK + KITCHEN + DINNING + 4 DRESS + 4 TOI + 4 BAL + LOUNGE

Carpet Area Sq. Ft.	Unit Area Sq. Ft.	Balcony Area Sq. Ft.	Core Area & Site Loading Sq. Ft.	Super Area Sq. Ft.
1277.36	1426.23	276.63	337.14	2040.00

All areas are in Sq.Ft (1SqMtr. = 10.764 Sq.Ft)



**ROYAL UNIT PLAN (1st to 19th Floor)**

4 BHK + KITCHEN + DINNING + 2 DRESS + 4 TOI + 4 BAL + LOUNGE + POWDER + SERVANT

Carpet Area Sq. Ft.	Unit Area Sq. Ft.	Balcony Area Sq. Ft.	Core Area & Site Loading Sq. Ft.	Super Area Sq. Ft.
1609.43	1776.06	307.10	411.84	2495.00



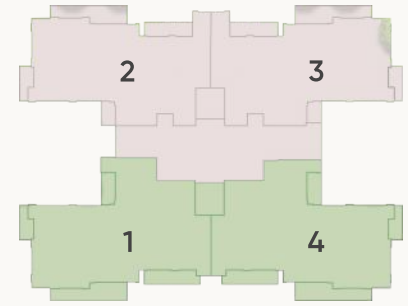
**PRIME UNIT PLAN (Ground to 17th & 19th Floor)**

3 BHK + KITCHEN + DINNING + 4 DRESS + 4 TOI + 4 BAL + LOUNGE

Carpet Area Sq. Ft.	Unit Area Sq. Ft.	Balcony Area Sq. Ft.	Core Area & Site Loading Sq. Ft.	Super Area Sq. Ft.
1715.14	1895.43	331.10	438.47	2665.00

All areas are in Sq.Ft (1SqMtr. = 10.764 Sq.Ft)





**ROYAL UNIT PLAN (18th Floor)**

4 BHK + KITCHEN + DINNING + 2 DRESS + 4 TOI + 4 BAL + LOUNGE + POWDER

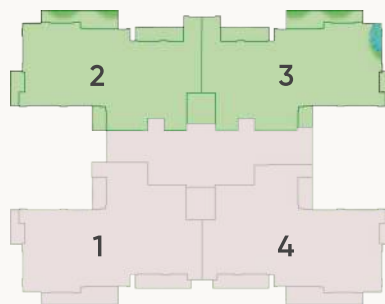
Carpet Area Sq. Ft.	Unit Area Sq. Ft.	Balcony Area Sq. Ft.	Core Area & Site Loading Sq. Ft.	Super Area Sq. Ft.
1598.35	1758.30	317.97	408.73	2485.00



LOWER LEVEL PLAN (20TH FLOOR)



UPPER LEVEL PLAN (21ST FLOOR)



**SKY VILLA UNIT PLAN (20th & 21st Floor)**

5 BHK + KITCHEN + DINNING + 4 DRESS + 5 TOI + 8 BAL + STORE + LOUNGE + POWDER + SERVANT WITH TOILET

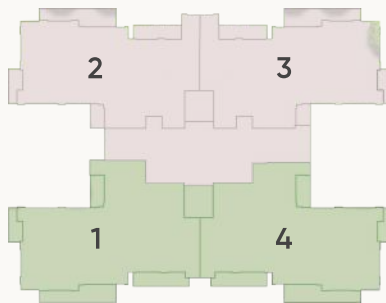
Carpet Area Sq. Ft.	Unit Area Sq. Ft.	Balcony Area Sq. Ft.	Core Area & Site Loading Sq. Ft.	Super Area Sq. Ft.
2918.01	3303.90	842.18	813.92	4960.00



**LOWER LEVEL PLAN  
(20TH FLOOR)**



**UPPER LEVEL PLAN  
(21ST FLOOR)**



**SKY VILLA UNIT PLAN (20th & 21st Floor)**

5 BHK + KITCHEN + DINNING + 4 DRESS + 5 TOI + 8 BAL + LOUNGE + POWDER + SERVANT WITH TOILET

Carpet Area Sq. Ft.	Unit Area Sq. Ft.	Balcony Area Sq. Ft.	Core Area & Site Loading Sq. Ft.	Super Area Sq. Ft.
3015.00	3494.53	825.28	845.19	5165.00



# Nestled at the center of everything



Constella is the perfect blend of luxury, convenience, and connectivity. It's a calming oasis amidst the hustle and bustle of the city life, offering a peaceful escape from the chaos of everyday life.

Strategically located at the Golf City, Shaheed Path Road, Lucknow, it offers a complete and holistic lifestyle with easy access to schools, hospitals, shopping centers, IT hubs, and more.

## EASY ACCESSIBILITY



Golf Course  
**5 min**



Ekana Stadium  
**5 min**



Medanta Hospital  
**5min**



Gomti Nagar  
**10 min**



Airport  
**10 min**



Hazratganj  
**15 min**



Charbagh  
Railway Station  
**20 min**



Alambagh  
Bus Stand  
**25 min**



Phoenix Palassio  
Mall  
**5 min**



Lulu Mall  
**5 min**



Mother & Child  
Hospital  
**5 min**



RML Hospital  
**5 min**



Iskcon Temple  
**5 min**



IT City  
CMS School  
**5 min**



GD Goenka  
School  
**5 min**

# Everything is closer than you think



# Prime Specifications

## Master Bedroom

---

<b>Flooring / Skirting</b>	:	Wooden laminated flooring
<b>Wall Finishes</b>	:	Acrylic Emulsion on POP punning
<b>Ceiling Finishes</b>	:	Oil bound distemper

## Bedroom

---

<b>Flooring / Skirting</b>	:	Vitrified tiles of minimum 600x600 mm size
<b>Wall Finishes</b>	:	Acrylic Emulsion on POP punning
<b>Ceiling Finishes</b>	:	Oil bound distemper

## Living / Dining Room

---

<b>Flooring / Skirting</b>	:	Superior quality vitrified tiles of minimum 800x800 mm size
<b>Wall Finishes</b>	:	Acrylic Emulsion on POP punning
<b>Ceiling Finishes</b>	:	Oil bound distemper

## Toilets

---

<b>Flooring / Skirting</b>	:	Antiskid ceramic tiles
<b>Wall Finishes</b>	:	Ceramic wall tiles up to dado level (approx. 2400 mm)
<b>Ceiling Finishes</b>	:	Oil bound distemper with false ceiling
<b>CP Fittings &amp; Accessories</b>	:	Grohe / Jaguar / Roca or equivalent toilet fitting in all toilets. Provision for geyser installation. Rain shower in master toilet.
<b>Others</b>	:	<b>Counter</b> - Granite / Tiles   <b>Sanitary Ware</b> - Premium quality range <b>Partition</b> - Glass cubical / Glass partition

## Kitchen

---

<b>Flooring / Skirting</b>	:	Antiskid ceramic tiles
<b>Wall Finishes</b>	:	Acrylic emulsion paint on walls
<b>Ceiling Finishes</b>	:	Oil bound distemper
<b>Others</b>	:	No working platform & kitchen sink

## Staircase Main & Staircase Fire

---

<b>Flooring / Skirting</b>	:	<b>Flooring</b> - Kota / Marble   <b>Skirting / Dado</b> - Same as flooring
<b>Wall Finishes</b>	:	Oil bound distemper
<b>Ceiling Finishes</b>	:	Oil bound distemper
<b>Others</b>	:	<b>Railing</b> - MS Railing

## Door & Windows

---

<b>Main Entrance Door</b>	:	Engineered laminated frame with laminated door shutters or painted / polished hardwood frame with Skin Moulded doors.
<b>Internal Doors</b>	:	-----Do-----
<b>Hardware</b>	:	Locks, Handles and Knobs (Mortise and Cylindrical locks) from reputed makes and brands. High quality steel / brass hardware.
<b>Windows</b>	:	Powder coated aluminium frame or UPVC frame windows with clear glass.

## Structure

---

Structure designed with the seismic considerations for the zone as stipulated by the BIS code and for better safety.

## Foundation

---

Reinforced concrete footings, Raft & columns.

## Facade

---

Exterior grade paint from reputed makes & brands.

## Electrical Wiring & Installation

---

- Fixtures & Fittings** : ISI mark switches / sockets, distribution boxes & circuit breakers from standard makes & brands.
- Wiring** : ISI mark concealed conduits with copper wire.
- Plumbing** : ISI mark CPVC water supply pipes with standard valves & accessories.
- Security System for Project** : CCTV surveillance would be provided, Internal communication system & Video Door Phones.

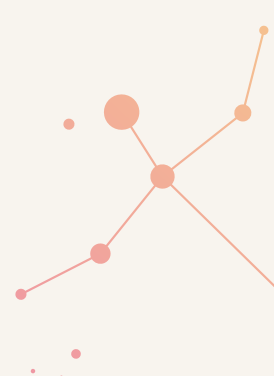
## EV Charging

---

Provision for EV Charging.

Tiles are susceptible to staining and variations in shade. Whereas all efforts shall be made during laying of tiles, to minimize, perceptible shade variations, the Developer, shall not be held liable in any manner whatsoever, for the same.

\*For technical reasons or unavailability, equivalent materials may be used in place of the materials specified above.



*\*Reference Images*





**ORO**  
**CONSTELLA**

Luxury Homes —————  
Golf City, Shaheed Path, Lucknow

 **CORPORATE OFFICE** : 801, 8th Floor, Eldeco Corporate Towers, Vibhuti Khand, Gomti Nagar,  
Lucknow-226010 | [www.ogroup.in](http://www.ogroup.in) | 89 5017 5017

**SITE OFFICE** : GH-1, IPT-2, Sector-D, Golf City, Shaheed Path, Lucknow-226030

Promoter Rera Registration No: UPRERAPRM220859 | Rera Registration No: UPRERAPRJ629194  
[www.up-rera.in](http://www.up-rera.in)